

# THE SETTER'S "LAST GASP" ROGAINE

WARA SPRING 12 HOUR  
20 OCTOBER 2018



Western Australian  
Rogaining Association  
PO Box 1201,  
Subiaco, WA 6904  
<http://wa.rogaine.asn.au>

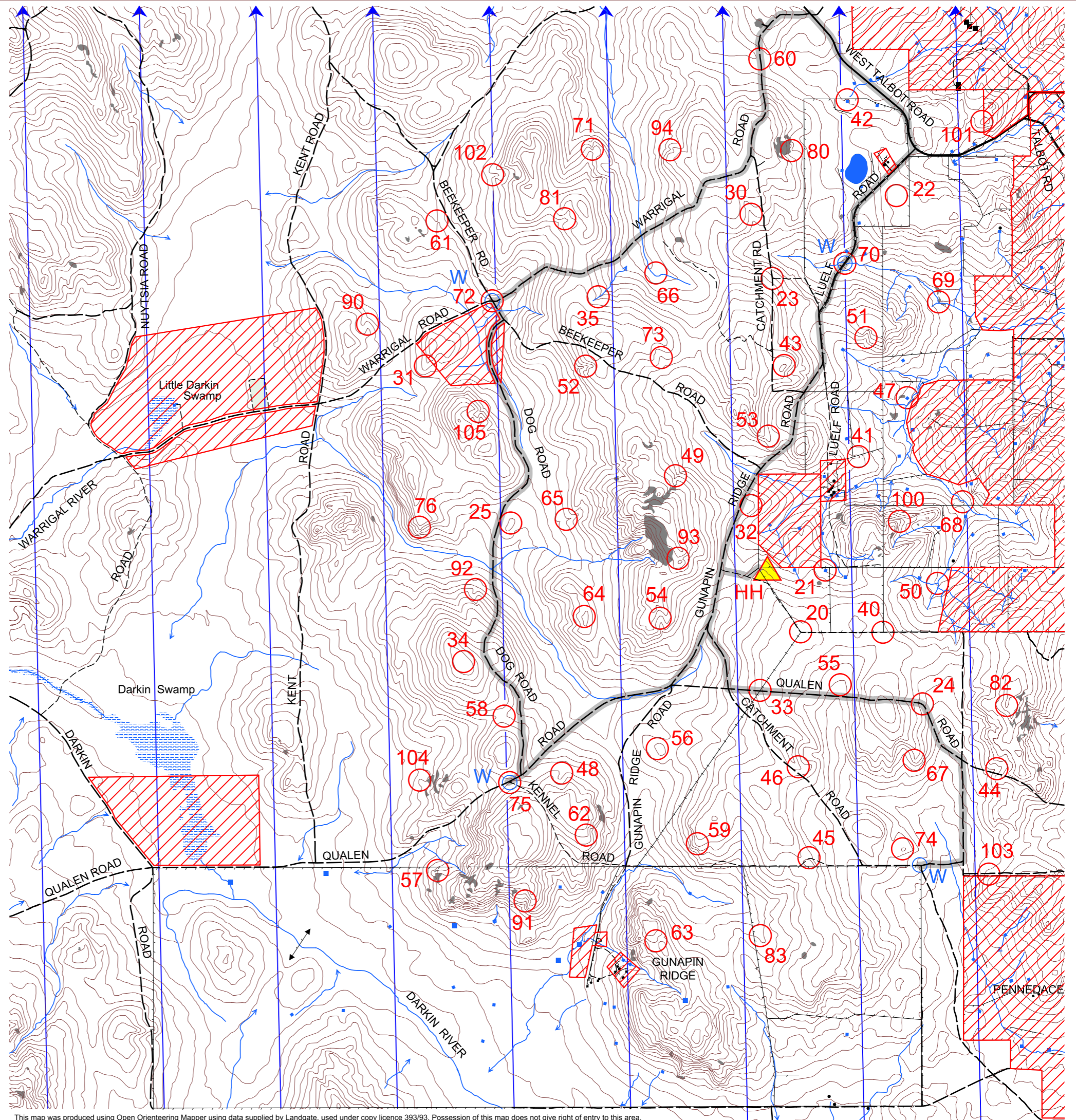
[eventinfo@wa.rogaine.asn.au](mailto:eventinfo@wa.rogaine.asn.au)

0 1km 2km 3km

SCALE 1:50,000, 5 metre contour interval

## LEGEND

Building	■	Hash House	▲
Continuations	→ → →	Magnetic North Line	↑
Control	○ 64	Out of Bounds	▨
Contours	⌒	Road, Sealed	—
Dam/Lake	■	Road, Major Gravel	- - -
Swamp	■	Track	- · - · -
Plantation	■	Watercourse	~
Fence	—	Water Drop	○ W
Powerline	—	Patrolled Road	▬
Rock Surface	■		



The State Government through the Department of Local Government, Sport and Cultural Industries and Lotterywest is a major supporter of Rogaining in Western Australia. Sport and recreation builds stronger, healthier, happier and safer communities.

<b>SETTERS</b>	<b>VETTERS</b>	<b>THANKS TO THE FARMERS</b>
John Tanner	Ken Maxfield	Falcon Hurst - Brendan & Sarah Luelf
Dick Blom	Nathan Seal	- Denis & Joanne Luelf
Stan Barclay	(and gps help)	Gunapin Ridge - Mike Rasheed
		- Laurie Fairclough
		Waverly Park - Max & Rosemary Edwards

WARA acknowledges the Traditional Owners of the land we are rogaing on today and would like to pay our respects to Elders past and present

**Emergency contact:**  
**Satellite Phone +881 622 449 700**

This map was produced using Open Orienteering Mapper using data supplied by Landgate, used under copy licence 393/93. Possession of this map does not give right of entry to this area.

## The "Setters Last Gasp" Spring 12 Hour Rogaine 20th October 2018

No.	Description	Points	No.	Description	Points	Important Information
20	Fce Angle/Power Line Inters 110deg 20m	20	60	The Very Broad Saddle/Road Inters 100deg 30m	60	<b>Control Cards</b> From 9-30 Saturday
21	NW cnr of the Dam 305deg 50m	20	61	The Shallow Saddle	60	
22	The Spur (4 large rusty tanks)	20	62	The Spur	60	
23	The Track Inters 50deg 35m	20	63	The Saddle	60	
24	The Road Bend 50deg 35m	20	64	The Knoll	60	
25	The Knoll	20	65	The Gully	60	
			66	The Broad Gully	60	
30	The Gully	30	67	The Spur	60	
31	The Spur	30	68	"A" Mini Waterfall	60	
32	The Broad Spur	30	69	The Warercourse	60	
33	The Road/Power Line Inters 335deg 40m	30				<b>Briefing</b> 9-45 Saturday
34	The Knoll	30	70	The Watercourse/Road Inters 70deg 60m Water	70	<b>Start</b> 10 00 Saturday
35	The Gully	30	71	The Gully (Head Of)	70	
			72	The Road Inters 244deg 50m Water	70	<b>Finish</b> 22 00 Saturday
40	The Fce Inters 205deg 35m	40	73	The Gully	70	<b>Hash House</b> Opens at 1700 Sat Closes by 2300 Sat
41	"A" Knoll	40	74	The Knoll (Water SE at Track Inters)	70	
42	The Dam Nth Side	40	75	The Road Inters 315deg 30m Water	70	<b>Sun Break</b> 6-00 to 8-00
43	The Knoll	40	76	The Spur	70	
44	The Gully	40	77		70	
45	The Road Bend 200deg 30m	40				
46	The Spur	40	80	The Gully (Sth Edge Of Rock Surface)	80	<b>Sunset</b> 1828
47	The Dam SE cnr	40	81	The Gully	80	<b>Moonrise</b> 1417
48	The Gully	40	82	"A" Rocky Knoll	80	
49	The Gully	40	83	The Shallow Gully	80	<b>Sunrise</b>
50	The Watercourse Junction	50	90	The Spur	90	<b>Moonset</b> 0303
51	The Gully	50	91	"A" Watercourse Junction	90	
52	"A" Watercourse Junction	50	92	The Gully	90	<b>Late Penalty</b> 10 points per minute or part minute.  LATE (no points) later than 2230 Saturday
53	The Spur	50	93	The Saddle	90	
54	The Gully	50	94	The Gully (Nth Water Course)	90	
55	The Broad Gully	50				
56	The Knoll	50	100	The "Boulder" Spur	100	<b>Controls Used</b>  64
57	The Spur (Among the Large Boulders)	50	101	The Spur	100	
58	The Broad Saddle	50	102	The Gully	100	
59	The Spur	50	103	"A" Spur	100	
			104	The Spur	100	
			105	"A" Watercourse Junction	100	
						<b>Total Points</b> 3660
<b>Water Drops:</b> At or near Controls 70, 72, 74, 75 If you are injured please make your way to a water drop or a patrolled road and wait there for help.			<b>Patrolled Roads.</b> See roads indicated on the map:			